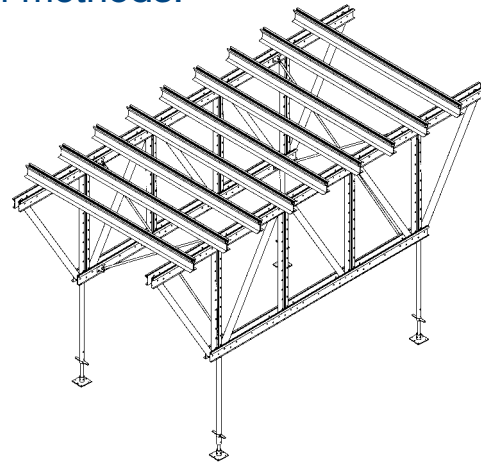


Alumalite® Table Form

The most versatile table form system available.

AlumaSystems

Alumalite® Table Form is the result of Aluma Systems' unequaled experience of truss system development and use. With a patented leg design that allows extension staffs and jacks to be used at the top and bottom of the table, this system can adapt to most slab and beam configurations, while meeting the demands of today's high speed construction methods.



Product Description

Aluma Systems introduced the lightweight aluminum flying table form to the world over 30 years ago. Today, the Alumalite® table form is being used in the housing industry and the slab and beam shoring market as a highly versatile mechanized shoring system.

The Alumalite® System is 30% lighter than its predecessor and can be flown in one piece with ease by a traditional capacity crane.

The depth of the truss is exactly 3'11" (1.2m) while the centre to centre distance of the legs is exactly

4'0" (1.22m). The latter allows conventional 4' wide shoring frames to be mated to the truss either on the top or bottom to achieve greater shoring heights.

Alumalite® Table Form

With its revolutionary patented double hollow extruded legs the Alumalite® table form makes beam and slab construction much easier and faster to handle than previous table forms or traditional methods. Adjustments in height can be done quickly to pick up internal beams or spandrels.

Screwjacks can also be used on the top chord without an extension staff. The Alumalite® leg incorporates bolt slots on each side, for connecting cross-brace brackets. If using three to four trusses per flying table, the crossbrace connectors can be attached

easily to each side of the leg. Underslung beams can be bolted via the bolt slot to the table as well as special bracing for hinge panels.

The Alumalite® Table Form conforms to all forming regulations, including CSA, CAL-OSHA AND ANSI.

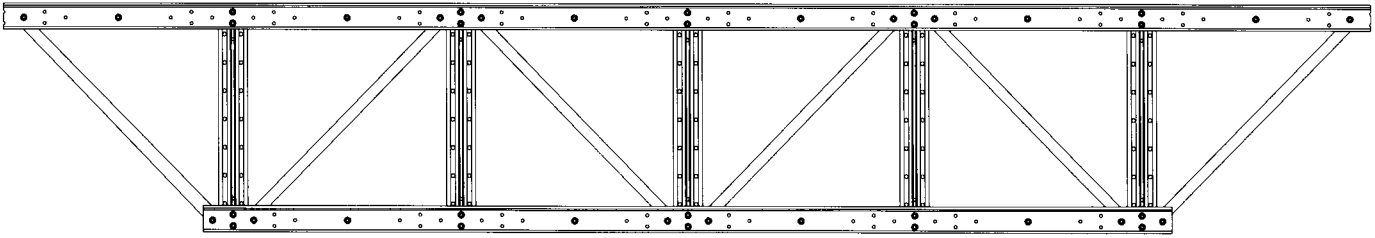
Features

- Allows the use of extension staffs at the top and bottom of the table forms
- Compatible with the full range of Aluma Beams® and Stringers
- Modular design simplifies assembly
- The most versatile truss system available
- Reduces construction cycle times

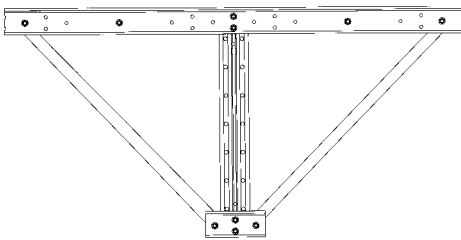
Warning, Limitation of Aluma Systems Liability:

This bulletin is intended only for general information on the Alumalite® Table Form. This product is only to be used for the purpose for which it is intended and only per the load capacities as established by Aluma Systems. This product must not be used when damaged and must be in fully functional condition. This product must be inspected by the user before use and properly stored, maintained and repaired. This product must not be misused nor overloaded.

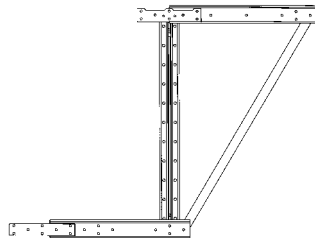
Basic Components



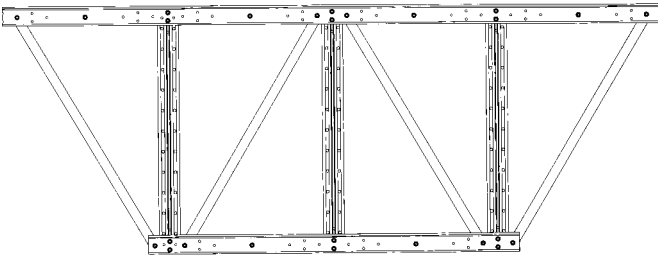
24'0" (7.32m) Truss



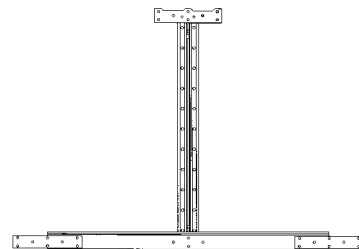
8'0" (2.44m) Spacer



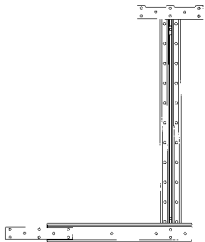
4'0" (1.22m) Spacer



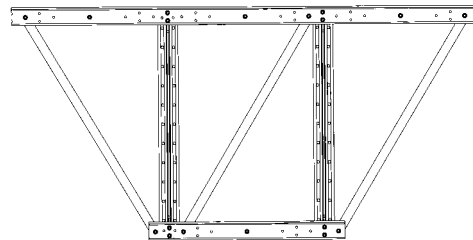
16'0" (4.88m) Truss



Truss Connector



4'0" (1.2m) Square End Truss

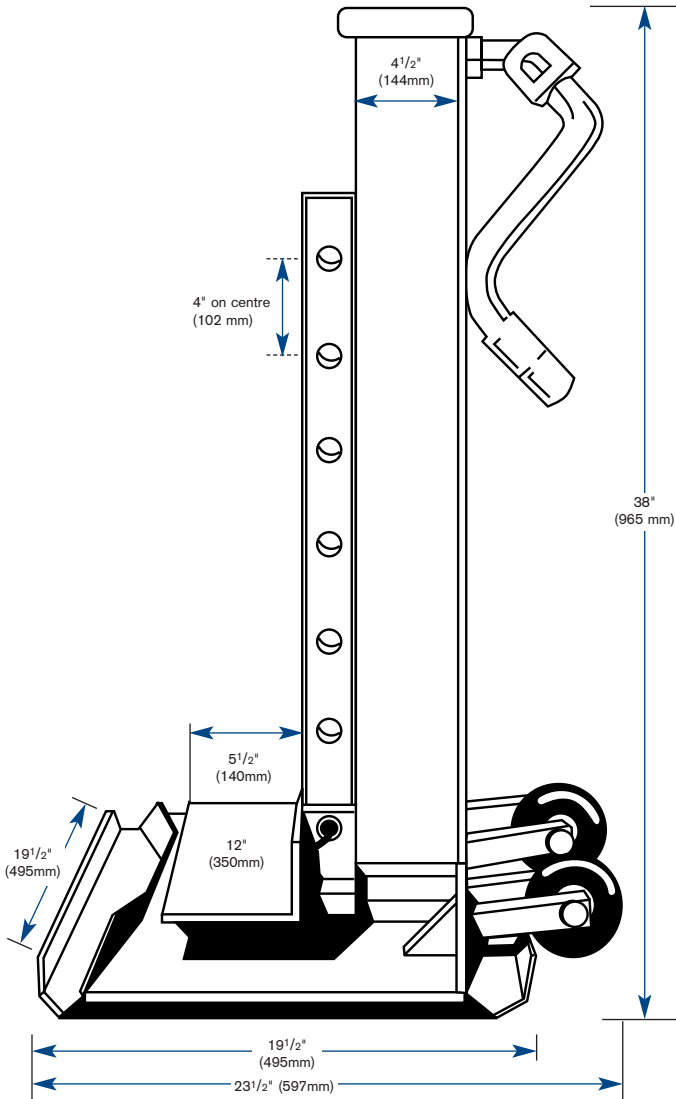


12'0" (3.66m) Truss

The Alumalite® Truss

DESCRIPTION

With a unique modular design based on 4'0" (1.22m) sections allow adjustments in length and height for different structural designs. (1.2m and 1.8m deep).



Alupalite® Lowering Device

ITEM NO. CAPACITY – LB. (KG)
 4321 S.W.L. Fully extended: 5000 (2213)
 S.W.L. Fully retracted: 5000 (2213)

DESCRIPTION

The Alupalite® Lowering Device was developed to ease the handling and lowering of Alupalite® table forms.

Made from welded steel components and a heavy duty gear box, the Alupalite® Lowering Device has proven itself to be a durable performer on the job.

The support plate can be adjusted up and down the height of the jack by re-positioning the plate in the pre-drilled holes. Connection is made with the rivet and hitch pin supplied.

Specifications

HEIGHT	OVERALL WIDTH	MIN. CLEARANCE	WEIGHT – LB. (KG)
38" (965mm)	23 1/2" (597mm)	3" (76 mm)	180 (81.65)

MAXIMUM REACH

Lifting plate in lower position 24" (610mm)
 Lifting plate in high position 48" (1.22mm)

Factor of Safety 2.5:1

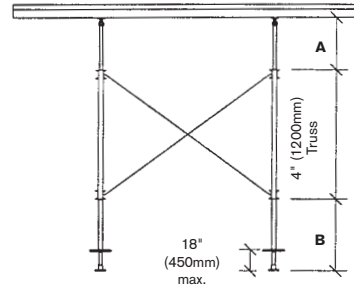
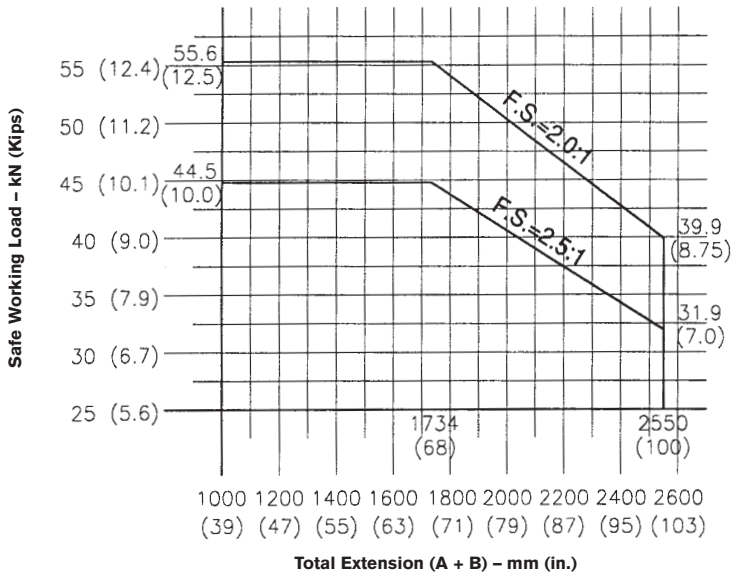
Low Profile Glide

DESCRIPTION

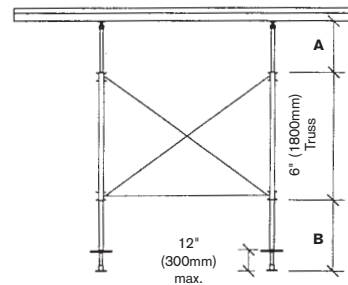
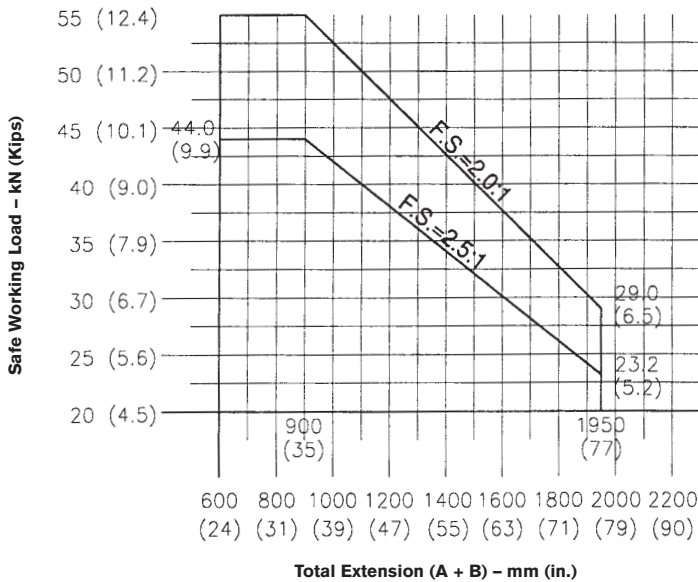
A new low cost, lightweight glide incorporates a polypropylene bearing that requires no greasing.

OVERALL HEIGHT
 2.75" (70mm)

Load Charts



4'0" (1.2m) Deep Alumalite® Truss with Top & Bottom Extension (with Standard #514 Screwjack & Extension Staff)



Allowable u.d.l. on Top Chord
 2.47 Kip/ft. (36.0 kN/m) with F.S. 2.0:1
 2.25 Kip/ft. (32.7 kN/m) with F.S. 2.2:1

6'0" (1.8m) Deep Alumalite® Truss with Top & Bottom Extension (with Standard #514 Screwjack & Extension Staff)

Consult our Engineering Department for assistance in the application of these accessories. Illustrations are not drawn to scale. All dimensions nominal.

Contact Us:

Visit our website at
www.aluma.com

**Aluma Systems
Canada Inc.**
 55 Costa Road
 Concord, Ontario
 Canada L4K 1M8

T : (905) 669-5282
 F : (905) 660-8045

**Aluma Systems
USA Inc.**
 2915 Sunrise Avenue
 Las Vegas, Nevada
 USA 89101

T : (702) 866-6513
 F : (702) 866-2620

**Aluma Systems
International, Inc.**
 55 Costa Road
 Concord, Ontario
 Canada L4K 1M8

T : (905) 669-5282
 F : (416) 736-2924